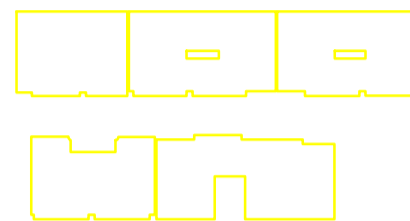
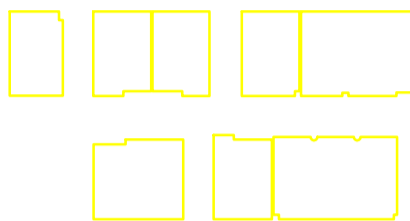


## pareti h. 300

ml 337x h. 2,0 = 674 mq (smalto)

ml 337x h. 1,0 = 337 mq (idropittura)



## pareti h. 125

ml 35,06 x h.1,25= 43,83 mq (idropittura)



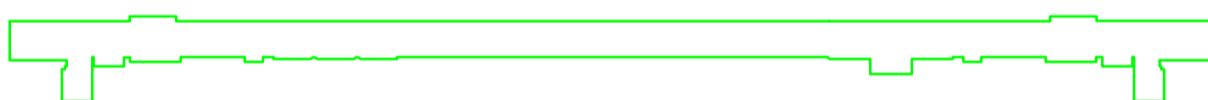
## pareti h. 120

ml 184,51 x h.1,2= 221,41 mq (idropittura)



## pareti h. 240

ml 185,47 x h. 2,4= 445,13 mq (smalto)

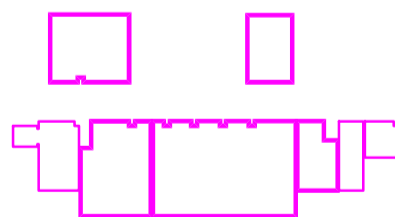


## pareti h. 325

ml 105,22 x h. 3,25= 341,97 mq (idropittura uffici)

ml 40,61 x h. 2,0 = 81,22 mq (smalto spogl.)

ml 40,61 x h. 1,25 = 50,76 mq (idropittura spogl.)



## soffitti

mq. 159,57

